



Town of Littleton School Committee



33 Shattuck St. * P.O. Box 1486 * Littleton, MA 01460-4486 *
Phone: (978) 540-2500 * Fax: (978) 486-9581 * Website: www.littletonps.org

JEN GOLD, Vice Chair
STACY DESMARAIS, Member

JUSTIN MCCARTHY, Chair

BRAD AUSTIN, Clerk
BINAL PATEL, Member

**School Committee Meeting
Littleton Police Station Community Room
500 Great Road
Hybrid
October 13, 2022
7:00 PM**

You are invited to a Zoom webinar.

When: Oct 13, 2022 07:00 PM Eastern Time (US and Canada)

Topic: School Cmte meeting of Oct 13, 7pm, 2022

Please click the link below to join the webinar:

<https://littletonma.zoom.us/j/83558088524?pwd=d1ZldUl3NnlhY25aR2o2bTQ4VDhCUT09>

Webinar ID: 835 5808 8524

Passcode: 154779

Or One tap mobile :

US: +13092053325,,83558088524# or +13126266799,,83558088524#

Or Telephone:

Dial(for higher quality, dial a number based on your current location):

US: +1 309 205 3325 or +1 312 626 6799 or +1 646 931 3860 or +1 929 205 6099 or +1 301 715 8592 or +1 719 359 4580 or +1 253 215 8782 or +1 346 248 7799 or +1 386 347 5053 or +1 564 217 2000 or +1 669 444 9171 or +1 669 900 6833

Webinar ID: 835 5808 8524

International numbers available: <https://littletonma.zoom.us/j/83558088524>

VIDEO OR CALL WILL BE MUTED UPON JOINING MEETING.

Please use the "RAISE YOUR HAND" feature in the zoom meeting to ask to speak.

PARTICIPANTS/ATTENDEES ARE REMINDED THAT BY JOINING THIS MEETING THAT YOU CONSENT TO YOUR LIKENESS AND AUDIO BEING USED AND REBROADCAST BY LCTV

This Rebroadcast meeting can be viewed online at LCTV On-Demand at <https://littleton.vod.castus.tv/vod>

AGENDA

Our mission is to foster a community of learners who strive for excellence and prepare each student to be a successful, contributing citizen in a global society.

7:00 I. ORGANIZATION

1. Call to Order
2. Pledge of Allegiance
3. Consent Agenda
 - Minutes – September 29, 2022
 - Oath to Bills and Payroll

7:05 II. INTERESTED CITIZENS

7:10 III. RECOGNITION

1. **Student Representative(s) Report:** *Student Representative(s), will give a report of events for each school.*
2. Other

It is the policy of the Littleton Public Schools not to discriminate on the basis of race, gender, religion, national origin, color, homelessness, sexual orientation, gender identity, age or disability in its educational programs, services, activities or employment practices. Further information may be obtained by contacting Lyn Snow, District Equity Coordinator at 978-540-2500, lsnow@littletonps.org or 33 Shattuck Street, P.O. Box 1486, Littleton, MA 01460.

Our mission is to foster a community of learners who strive for excellence and prepare each student to be a successful, contributing citizen in a global society.

7:15 IV. PRESENTATIONS

- 1. Review of Strategic Plan, Standard 4, Goal 1, School Safety; Update from resource officer and/or Police Chief, Safety and Security Advisory Committee regarding school and district safety plan (15 min)-** *Our School Resource officer and other members of LPD will give an overview of school safety training and procedures.*
- 2. SEL strategies and interventions that support building Positive School Climates (15 mins):** *Superintendent Clenchy and Director of Student Services, Lyn Snow will give a brief overview of supports and programming tailored toward building and maintaining positive school climates.*
- 3. Superintendent's Update:** *October 1st enrollment, upcoming vaccination clinics, fall Connections program (5 mins).*
- 4. Review of Strategic Plan (20 mins):** *Principal Everhart and Principal Harrington will review our District Strategic Plan, Standard I: Curriculum, Instruction, and Assessment- schools will discuss SIP's specific to goals for the 2022/2023 school year, discuss major accomplishments, challenges and any suggested revisions or goals that should be taken into consideration as we review Standard I as part of the process for creating an updated Strategic Plan, 2023-2028*

8:30 V. NEW BUSINESS

- 1. 2023/2024 LPS Capital Plan (10 mins)-** *Business Manager, Steve Mark will present a draft Capital Plan for the FY 24 budget year.*

8:40 VI. INTERESTED CITIZENS

8:45 VII. SUBCOMMITTEE REPORTS

- 1. PMBC**
- 2. Budget Subcommittee**
- 3. Policy Subcommittee:** (see LPS website to view all policies)
<http://www.littletonps.org/school-committee/school-committee-policies>
- 4. School Start Time Update**

9:00 VIII. ADJOURNMENT/EXECUTIVE SESSION

Motion to move into Executive Session for the purpose of Contract Negotiations with no intention to return to Open Session.

NEXT MEETING DATE

OCTOBER 27, 2022

Littleton Police Department Community Room

7:00 PM

It is the policy of the Littleton Public Schools not to discriminate on the basis of race, gender, religion, national origin, color, homelessness, sexual orientation, gender identity, age or disability in its educational programs, services, activities or employment practices. Further information may be obtained by contacting Lyn Snow, District Equity Coordinator at 978-540-2500, lsnow@littletonps.org or 33 Shattuck Street, P.O. Box 1486, Littleton, MA 01460.

Our mission is to foster a community of learners who strive for excellence and prepare each student to be a successful, contributing citizen in a global society.



Town of Littleton School Committee

33 Shattuck St. * P.O. Box 1486 * Littleton, MA 01460-4486 * Phone: (978) 540-2500 * Fax: (978) 486-9581 * Website: www.littletonps.org

JEN GOLD, Vice Chair
STACY DESMARAIS, Member

JUSTIN MCCARTHY, Chair

BRAD AUSTIN, Clerk
BINAL PATEL, Member

SCHOOL COMMITTEE MINUTES September 29, 2022 7:00PM

PRESENT: Justin McCarthy
Jen Gold
Brad Austin
Stacy Desmarais
Binal Patel

ALSO PRESENT: Kelly Clenchy
Steve Mark
Bettina Corrow

NOT PRESENT:

CALL TO ORDER

Justin McCarthy called the meeting to order at 7:00p.m.

On a motion by Binal Patel and seconded by Brad Austin it was voted to approve the Sept. 15, 2022, agenda as presented. (AYE: Unanimous).

INTERESTED CITIZENS

None

RECOGNITION

- 1. Student Representative(s) Report:** Student Representative, John Feltus, gave an update of the events happening at each school.
- 2.** Superintendent Clenchy mentioned that the district will bring back "Connections Workshops" on Oct. 26 with daycare provided by Park and Rec. More information about this event will come soon.
- 3.** Superintendent Clenchy mentioned a Covid Vaccine clinic was held on Wednesday Sept. 28 and more to follow in October. The flu vaccine will also be offered.

It is the policy of the Littleton Public Schools not to discriminate on the basis of race, gender, religion, national origin, color, homelessness, sexual orientation, gender identity, age or disability in its educational programs, services, activities or employment practices. Further information may be obtained by contacting Lyn Snow, District Equity Coordinator at 978-540-2500, lsnow@littletonps.org or 33 Shattuck Street, P.O. Box 1486, Littleton, MA 01460.

Our mission is to foster a community of learners who strive for excellence and prepare each student to be a successful, contributing citizen in a global society.

NEW BUSINESS

1. NWEA MAP Report: Director of Teaching and Learning, Elizabeth Steele gave a presentation on the NWEA MAP Growth Assessments for the 2021-2022 school year.

Important Reminders about MAP Growth

- This data is a piece of the puzzle
- MAP Growth Assessments are adaptive
- Assess 3X a year
- Provide real time data on current achievement
- Provide real time data on what students are ready to learn next

Mrs. Steele presented the Student Growth Summary for all four schools and compared the data from Fall 2019 through Spring 2022. The overview of the data was included in the presentation. She went through the strengths and areas of improvement for both Reading and Math. She also presented the individual grades achievement in both subjects in each grade assessed. Each grade demonstrated growth in each subject. It is even higher than the 2020 national norm.

Kelly Clenchy - We use this assessment because it is real time data, it is adaptive, and we can use this data in real time when gearing our instruction in the classrooms to both the high achievers as well as the students who might need some help in certain areas.

Key Takeaways

- Our students continue to learn and demonstrate growth.
- We continue to meet the students where they are.
- We are seeing signs of rebound from the pandemic.

Brad Austin – I am happy that we are having this kind of an assessment tool.

Stacy Desmarais – What kind of questions are in these tests? How is the test presented to students?

Beth Steele – There are multi-choice, drag and drop, and fill ins for example. Students are aware that this test is only for the teachers to learn where the students are academically, and that the results will not be on a report card.

Justin McCarthy – Our students are achieving at the National Norm in Grade 6. At what level of degree are we shaking things up?

Beth Steele – It depends on the data we receive. We can switch groups around depending on data received.

Cheryl Temple – Each assessment period is important, and even with three times a year the instruction in between the assessments is crucial and gives the teachers time to focus on strengths and areas of improvement.

Justin McCarthy – How long have we used this program? Do we ever evaluate if there are other programs that have data, where we could compare to other MA school's data?

Kelly Clenchy – We have used it since 2014. I am critical when I am looking at assessment programs and if we are taking the time to do these assessments, I want to make sure the data is valuable, and we are successful.

2. Review of Strategic Plan: Principal Kane and Principal Temple reviewed the Strategic Plan as noted: Standard 1: Curriculum, Instruction, and Assessment. Each Schools will discuss SIPs specific to goals for the 2022/2023 school year, discuss major accomplishments, challenges, and any suggested

revisions or goals that should be taken into consideration as we review Standard 1 as part of the process for creating an updated Strategic Plan, 2023-2028

Russell Street School Presentation:

Goals:

- Implement a standards-based Pk-12 curriculum that is aligned with the state frameworks and is well articulated vertically and horizontally
- Develop and implement a five-year curriculum review cycle
- Use multiple forms of data to measure and evaluate student achievement
- Identify and implement effective instructional practices to support the academic achievement and social-emotional skills of diverse learners

Accomplishments:

- Standards-based report card
- K-5 professional collaboration for vertical alignment
- PD for math workshop model and extended writing tasks in reading, math and science
- Math curriculum review and implementation of new math curriculum (ongoing)
- Foss materials purchased and shared
- Use of grading rubrics
- Addition of a kiln to support the fine arts program
- Implementation of 1-1 Chromebook program
- Regular data provided with MAP testing (3 times per year) and Acadience

Challenges:

- Common time for K-5 to collaborate
- Implementing several new initiatives (Into Math, Foundations, Lucy Calkins)
- Focused professional development time
- Time spent on testing
- Managing the range of learners
- Lack of schedule flexibility with shared UA staff

Revisions/goals to consider:

- Goal: All students will demonstrate individual growth in all tested subjects
- Goal: Continued incorporation of the UDL model of instruction
- Mental health / anxiety
- Alignment of curriculum

Jen Gold – Would you be able to give an example of the small changes you have done?

Cheryl Temple – When a teacher is providing a tool to solve a problem, they may offer up one piece instead of giving the student the entire thing. It gives students the ability to feel like they have options and to be able to pick their own path to the answer or result.

Beth Steele – It gives our students a feeling of ownership and that they can work towards the same result but in different ways.

Binal Patel – You mentioned lack of schedule flexibility? Do you see this as a challenge down the road?

Cheryl Temple – I can give you an example. With the new math curriculum, it would make sense that we had it in one block. But our schedule does not always allow that, but it does not mean that the students are not getting accurate instruction in all areas. We might sometimes just need to be a little more creative.

Kelly Clenchy – Most K-5 teaching is mapped out. If we were to add something else in, we would have to take something away. We must ask if it is worth it. There is a lot to think about.

Stacy Desmarais – Balancing academic and mental health? Do we have room to step back from the curriculum and focus more on the mental health of the students? Most of our students are performing above the National average.

Cheryl Temple – We have built in some fun activities during the school year to give the teachers an option for their students such as painting, etc. Classrooms will rotate throughout the year doing these fun activities.

Justin McCarthy – Do we have to do the MAP tests in January?

Beth Steele – Yes, to get the data by the end of the school year we need to do the assessment three times a year.

Kelly Clenchy – It is a challenge, but we make it work.

Shaker Lane School Presentation:

Goals:

- Implement Lucy Calkins Writing Program
- Engage in professional collaboration to examine and evaluate math curriculum for implementation during the 2022-23 school year
- Administer AIMSWeb Plus Early Literacy & Reading Assessments and Shaywitz Dyslexia Screener
- Lexia programming for all K & T students/targeted usage for Grade 1 & 2
- Implement Heggerty Phonemic Awareness Program in Grades K-1
- Review reading and math progress through data meetings to identify students in need of remediation and differentiation
- Diversified Reading Interventions

Accomplishments:

- Lucy Calkins Writing Program PD (continuation)
- Selection of Into Math Program
- Early Literacy & Dyslexia Screener Administered
- Lexia usage for all K-1 students & targeted for Gr 2 students
- Implemented Heggerty Phonemic Awareness Program in Grades K-1
- Review student reading performance to target interventions

Challenges:

- Common time for PreK-5 to collaborate
- Implementing several new initiatives (Into Math, Lucy Calkins)
- Time spent on assessments
- Managing the range of learners
- Social emotional & behavioral needs of students
- Time...

Revisions/goals to consider:

- Increase use of Lexia to all students in Grades K-2
- Develop math data meetings with Math Interventionist
- Provide PD for Into Math program & reflect on pilot year
- Continued incorporation of the UDL model of instruction
- Develop additional strategies to support social-emotional needs of students

Binal Patel – How much time are they using technology in the classroom?

Michelle Kane – I would say between 10-20 minutes a day.

Stacy Desmarais – Are you monitoring the technology time at all?

Michelle Kane – The center time is 10-12 minutes.

182 Stacy Desmarais – Do we have an adjustment counselor in each school?

183 Kelly Clenchy – I'll let Lyn Snow speak to this

184 Lyn Snow – At Shaker Lane we have a school psychologist, an adjustment counselor and a BCBA, at
185 Russell Street we have a school counselor, a school psychologist and our second BCBA that covers
186 RSS, Middle and High School. At our Middle School we have a school adjustment counselor and a
187 social worker that covers the entire district as well as we have a school phycologist. At our high school
188 we have school phycologist, an adjustment counselor and two guidance counselors.
189

190
191 Brad Austin – I really appreciate this presentation. I am happy to see you are focusing on both students
192 and the staff wellbeing.
193

194 **INTERESTED CITIZENS**

195 Margot Bloomstein – As we heard in Mrs. Steele's presentation, in person learning is so important. Covid hit
196 our house and I realized that the school district's guidelines do not align with DESE's guidelines. You are
197 supposed to wear a mask on day 6 and up to 10 days after. But since we are not required to report this to the
198 school some may not follow this. But I realized that the school is not doing contact tracing and it is up to the
199 parent to contact other parents to let them know that their child has been in close contact.

200 Justin McCarthy – LPS is following DESE's guidance. DESE does not recommend universal masking.

201 Brad Austin – What Margot is saying makes some sense. If you get exposed, you should mask. I think we
202 should think about this.

203 Binal Patel – I am not sure if masking is beneficial. I believe you can be exposed to anyone in the schools not
204 just in the classroom. It is hard to know exactly where you were exposed.
205

206 **SUBCOMMITTEE REPORTS**

207 **1. PMBC:** High School roof is still on track. Hopefully it will be finalized in the spring.
208

209 **2. Budget Subcommittee:** We had a meeting this afternoon. We have identified several Capital items at this
210 point.
211

212 **3. SL MSBA Update:** Superintendent Clenchy presented an Eligibility period – schedule of deliverables
213 from the MSBA Board. An overview of the schedule was included in the packet.
214

215 **4. SEPAC:** A meeting last Tuesday. Another parent meeting scheduled for Oct. 11. Oct. 17 is another
216 meeting scheduled at 1PM with staff of LPS.
217

218 **5. Policy:** None
219

220 **6. School Start time Subcommittee** – We meet with PPI. The report should be ready in a few weeks. They
221 have more than 20 different options. The report will provide three different options and lots of data points.
222 We will start to work on the survey which will go out to the community.
223

224 **ADJOURNMENT**

225 On a motion by Brad Austin, and seconded Jen Gold by it was voted to adjourn at 9:21PM. Roll Call Vote:
226 Brad Austin, AYE; Justin McCarthy, AYE; Jen Gold, AYE; Binal Patel, AYE; and Stacy Desmarais, AYE.
227

228 **DOCUMENTS AS PART OF MEETING**

229 NWEA Growth Assessment

230 Strategic Goal – Standard 1 – Shaker Lane and Russell Street School overview

231 MSBA Eligibility period – schedule of deliverables



Littleton Public Schools
Town of Littleton, MA

GIRL PLAYS HIGH SCHOOL FOOTBALL - LITTLETON MA
(Channel 5 News)

LITTLETON PUBLIC SCHOOLS
DISTRICT STRATEGIC PLAN 2019-2023
STANDARDS, GOALS AND ELEMENTS

Standard #4: Climate / Culture

Foster a respectful and responsive culture that provides a safe, secure learning and work environment.

Goal#1: Review, maintain and modify protocols and procedures that provide all students and staff with a safe and secure learning and work environment

Elements

- Continue to convene a Safety and Security Advisory Committee composed of LPS administration, School Committee, police and fire officials.
- Annually assess school/ district safety plans.
- Annually assess building security and surveillance equipment.

District-wide Indicators of Success:

- Published schedule of the Safety & Security Advisory Committee meeting dates and minutes from meetings
- Review, update and implement with staff, crisis and training plans which include emergency protocols and emergency preparedness.
- Completion of identified trainings. Meetings with fire and police department representatives to review procedures.
- Successful completion of evacuation and safety drills within each school building.
- Yearly implementation of a modified ALICE program, including training all building staff in the ALICE concepts.
- Completion of CPI training for required staff

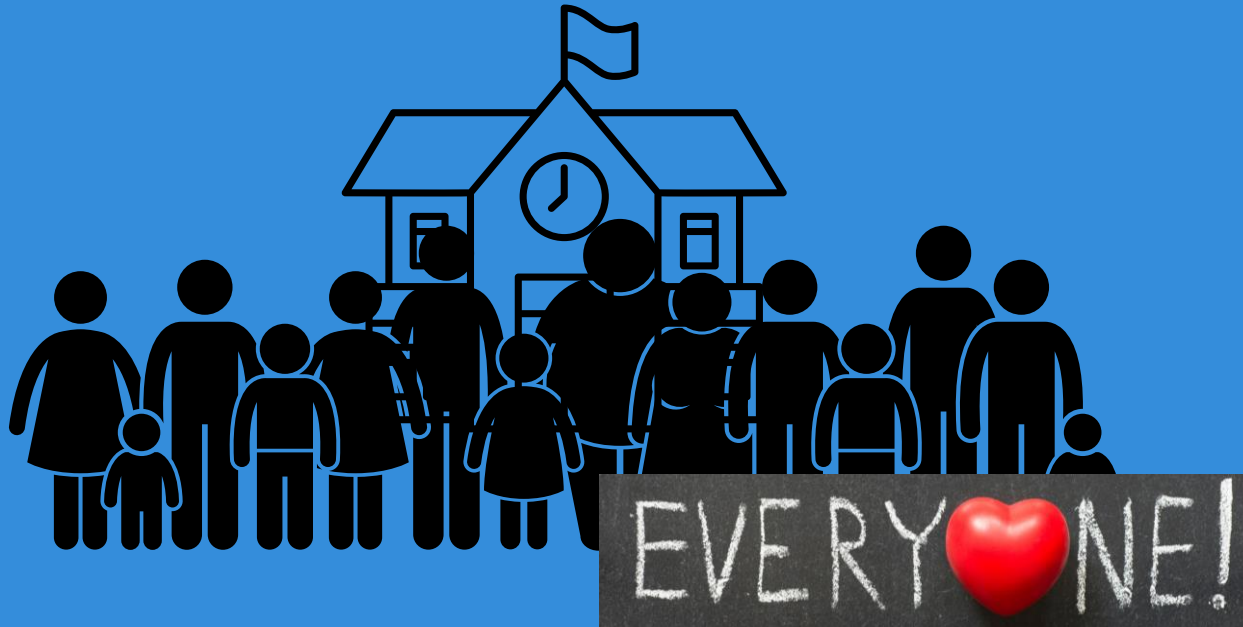


**LITTLETON
PUBLIC
SCHOOLS**

Social Emotional Learning & Mental Health Supports Update

October 13th, 2022

WHO SUPPORTS THE SOCIAL EMOTIONAL NEEDS OF LITTLETON PUBLIC SCHOOLS?



LITTLETON PUBLIC SCHOOLS

CLINICAL TEAM LEADERS

Sarah Dorfman
School Counselor
Licensed Social Worker

Teresa Fiori
Behavior Analyst
Board Certified Behavior Analyst

HEAD OF CLINICAL TEAM RESPONSIBILITIES

- Conduct Monthly Meetings
- Formal/Informal Needs Assessments
- Review district protocols, data collection procedures
- Referral/Intake/Discharge/Ongoing Monitoring & Follow-up
- Serve as a member of the LPS Wellness Committee
- Coordinate screenings, organize implementation, analyze results
- Professional Development
- Community Outreach
- Regular communication with the Director of Student Services



CLINICAL TEAM MEMBERS

SHAKER LANE SCHOOL

Danya Sclar, NCSP

- School Psychologist

Anna Dyadko, LMFT

- Adjustment Counselor

Katie Sapp, LABA/BCBA

- Behavior Analyst

Mary Philpot, NP

- Nurse

RUSSELL STREET SCHOOL

Jacklyn Quesnel, CAGS

- School Psychologist

Rachel Leighton, M.Ed

- School Counselor

Teresa Fiori, LABA/BCBA

- Behavior Analyst

Kathleen Sullivan, RN

- Nurse

LITTLETON MIDDLE SCHOOL

Maureen McMahon CAGS

- School Psychologist

Sarah Dorfman, MSW

- Adjustment Counselor

Teresa Fiori, LABA/BCBA

- Behavior Analyst

Kathy McCarthy, RN

- Lead Nurse

Cassandra Caley, RN

- DW Nurse

LITTLETON HIGH SCHOOL

Melissa Benson, LMHC

- School Psychologist

Tracy Turner, LICSW

- Adjustment Counselor

Chris Christy, MSW

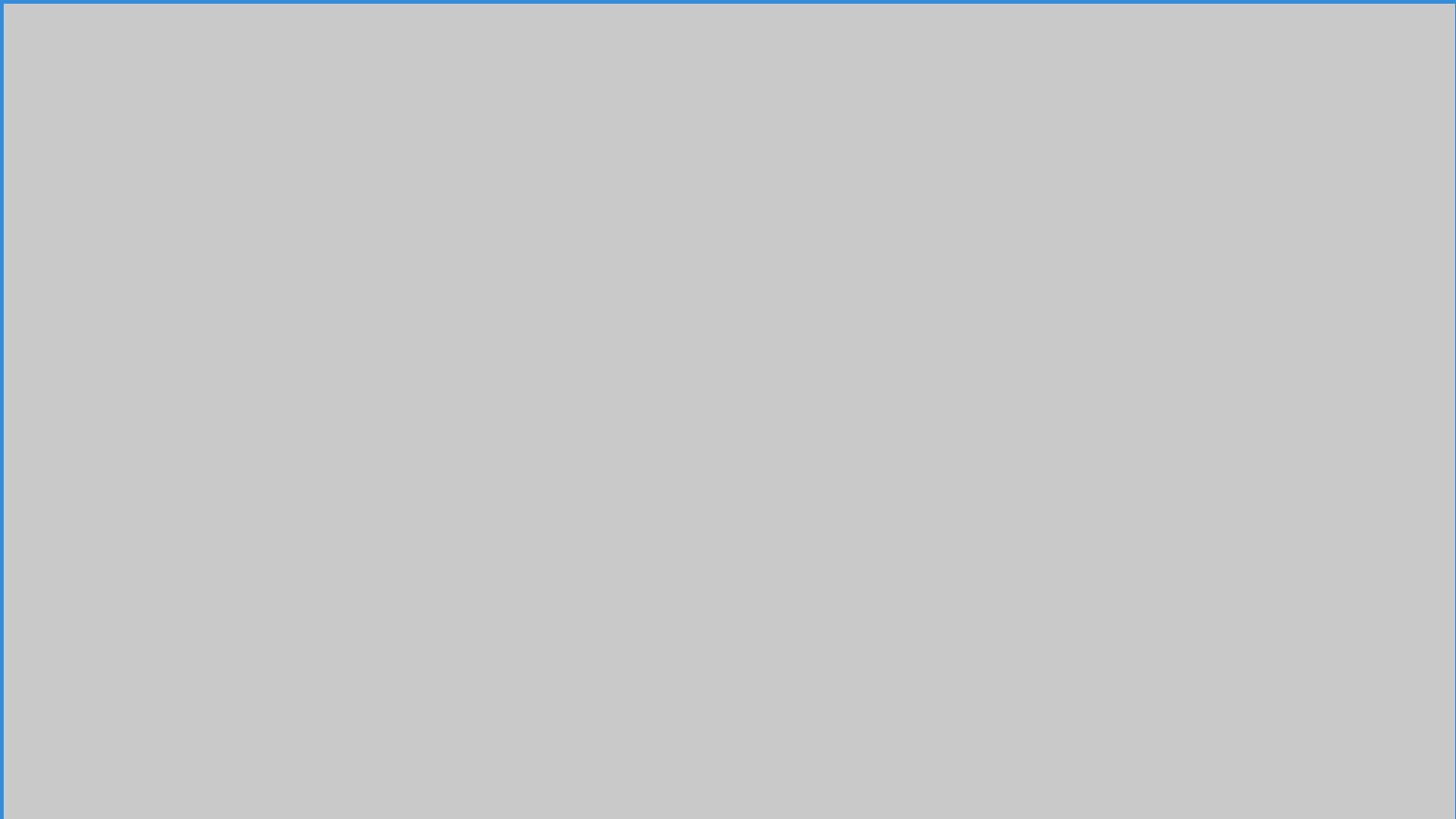
- School Counselor

Jennifer He, M.Ed

- School Counselor

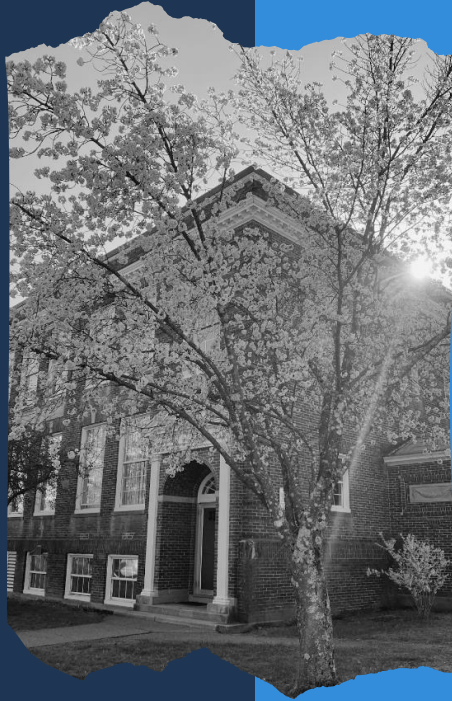
Chris Porell, RN

- Nurse



https://youtu.be/ouXhi_CfBVg

DISTRICT



- Diversity, Equity & Inclusion
- Care Solace
- Massachusetts Partnerships for Youth
- Parent/Staff/Student Surveys
- Community Connections
- Screening/Evaluations
- Wellness Committee
- Counseling
- Student Education
- Employee Assistance Program
- Team Approach
- District Curriculum Accommodation Plan
- District Professional Development
- Faculty Led Professional Development
- Ecological Restructuring
- Using a Systems Approach

LITTLETON HIGH SCHOOL



- Safe and welcoming environment; open doors, comfortable furniture
- Surveys/Needs Assessments/Progress Monitoring/ Screening
- Youth Risk Behavior Survey/Signs of Suicide Program
- Staff drop-in times
- Mindfulness practices
- Individual school counseling & short-term counseling groups
- Young Adult Group with Transition (18-22) Program
- Therapy Dogs
- SEL instruction imbedded throughout the day
- LHS School Counseling Newsletter & Instagram
- School wide assemblies
- Walking Club on Wednesdays
- Advisory program
- New programs/initiatives development - e.g., Bridge Program, Universal Screening
- Consultation and collaboration with community-based treatment providers
- Information & referrals for community-based treatment

@LHS_SchoolCounseling



LITTLETON MIDDLE SCHOOL

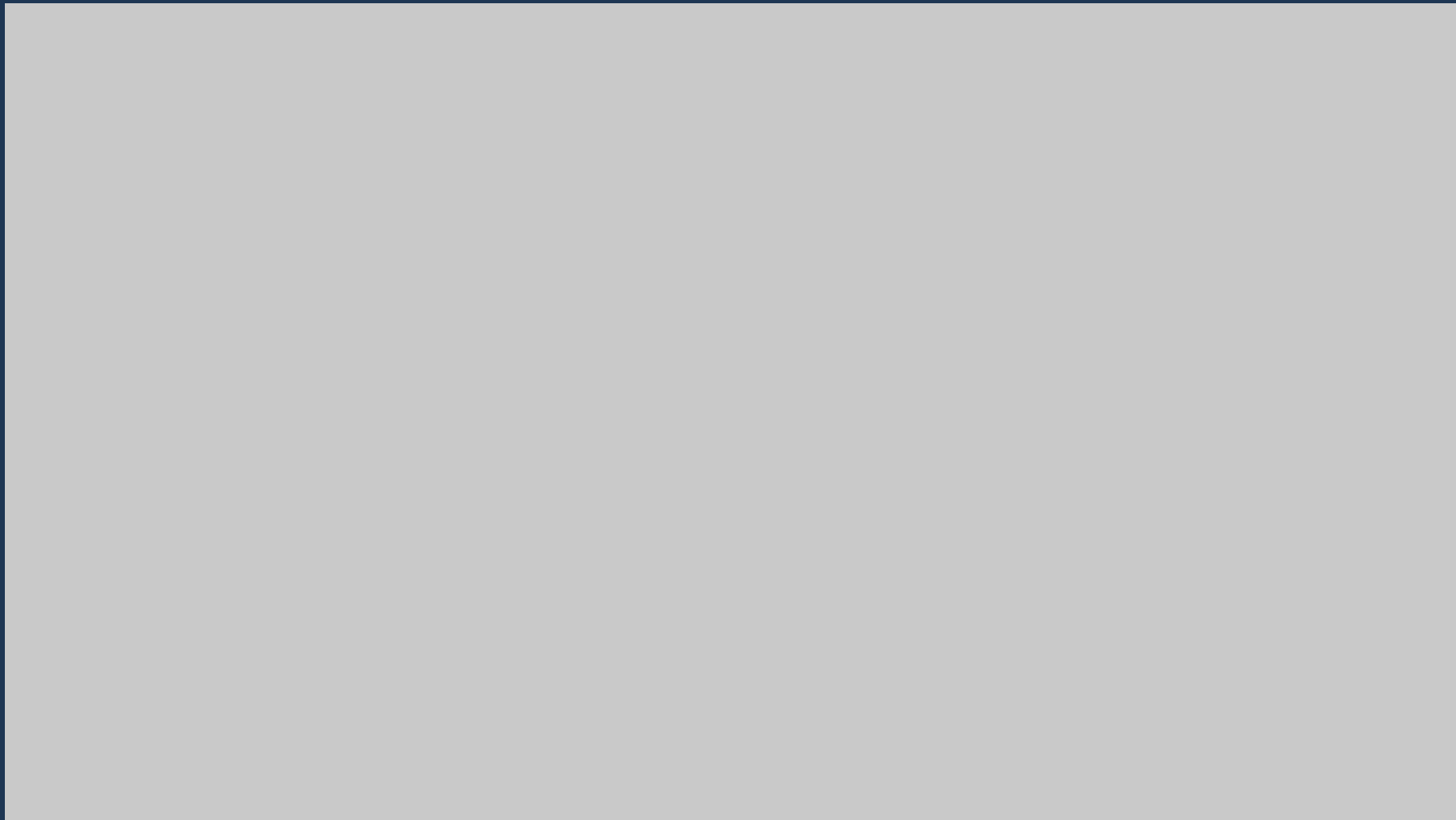


- Clinical team collaboration
- Anxiety reduction
- Re-entry after hospitalizations
- Mindfulness practices
- Signs of Suicide Prevention Program
- Youth Risk Behavior Surveillance
- Helping students through hard moments
- Accountability partners
- Classroom lessons - pronouns
- Fact vs. Feelings, Three good things
- Field day
- Friday music (staff)
- Pizza trolley
- Cairns
- Advisory Program
- Liaison to outside clinicians
- Referrals-Care Solace, Interface

RUSSELL STREET SCHOOL



- Spirit Week
- STRIPES - PBIS
- Special themed activities (RSS Day, You've Been Booed, sports days, etc.)
- Breaks with students
- Therapy dog visits
- Lunch Bunch
- Parent Engagement
 - Check ins/consults with students and families
- Mental Health Minute added to the Weekend Update
- Keeping students connected with one another - morning meeting/end of the day activities
- Constant adult presence - arrival, dismissal, cafeteria, recess
- Social Thinking lessons
- SEL times added to the schedule
- Table Talk Tuesdays
- WIN Wednesdays

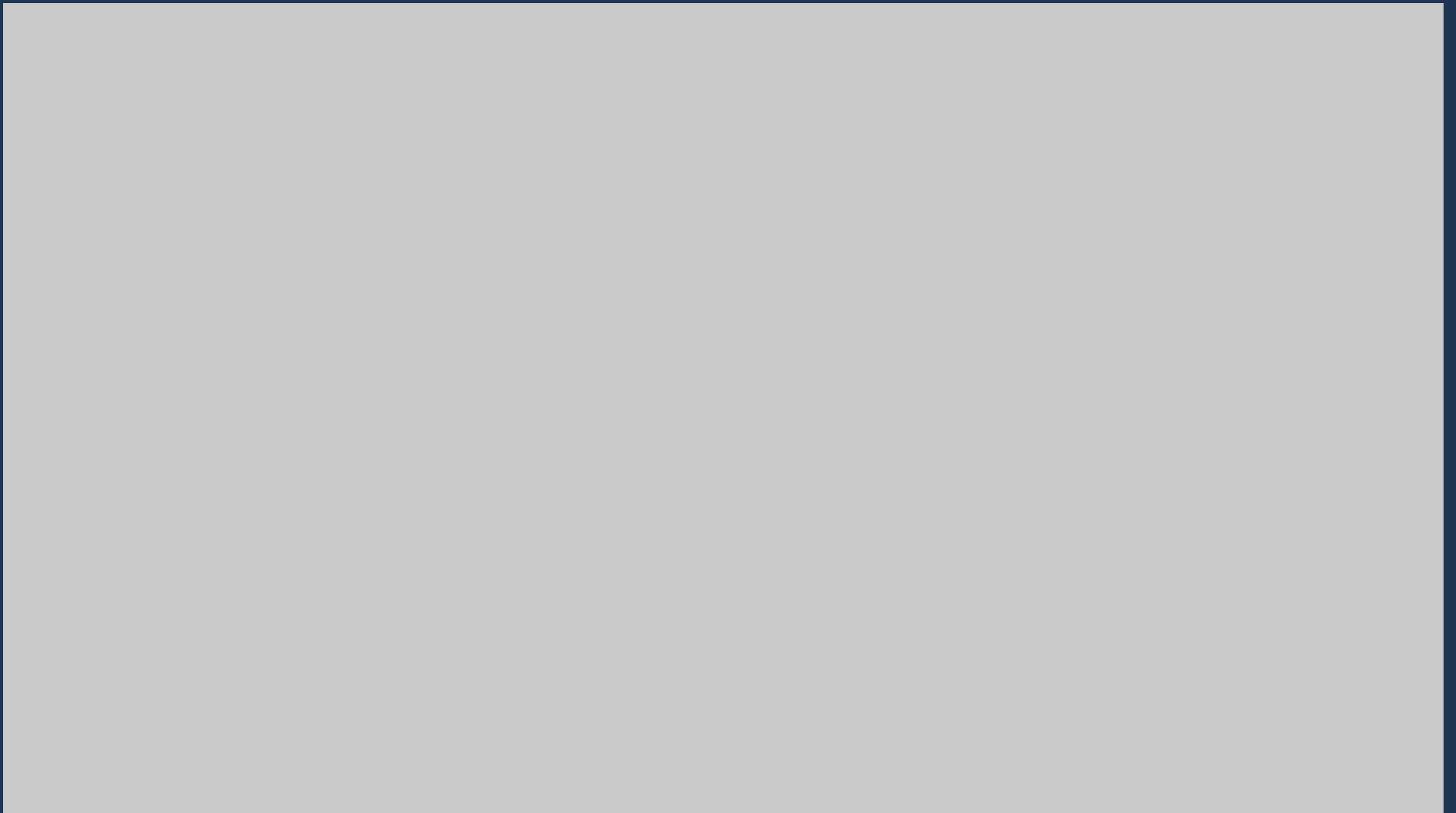


SHAKER LANE SCHOOL



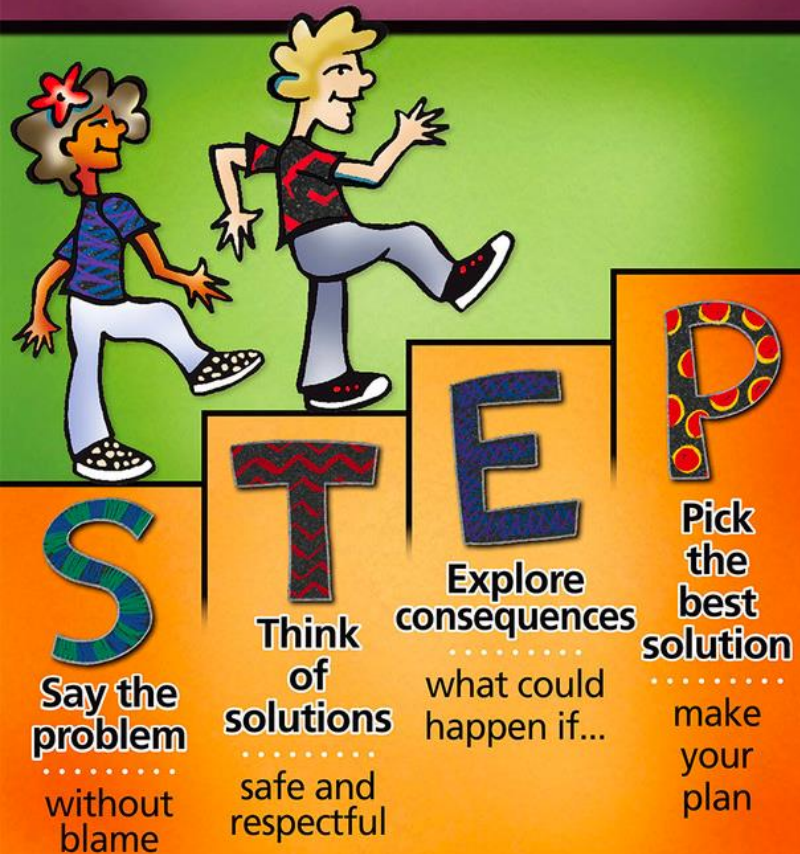
- Staff Meetings - Embedded PD
- Relationship Building
- School Pride/Spirit Days
- Focusing on the culture of the building
- Working to keep staff & students happy and motivated
- Being there for staff - pivotal impact on students
- Group and individual support
- Class Lessons
- Zones of regulation
- Social Thinking
- Social Stories





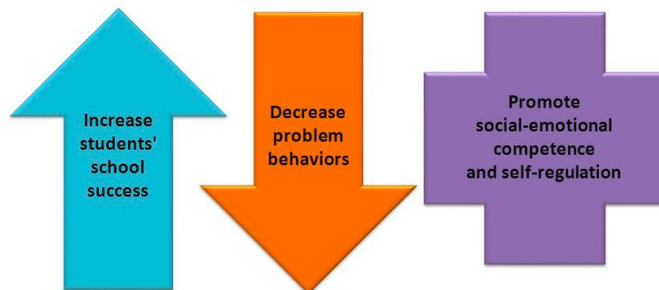
SECOND STEP

Problem-Solving Steps

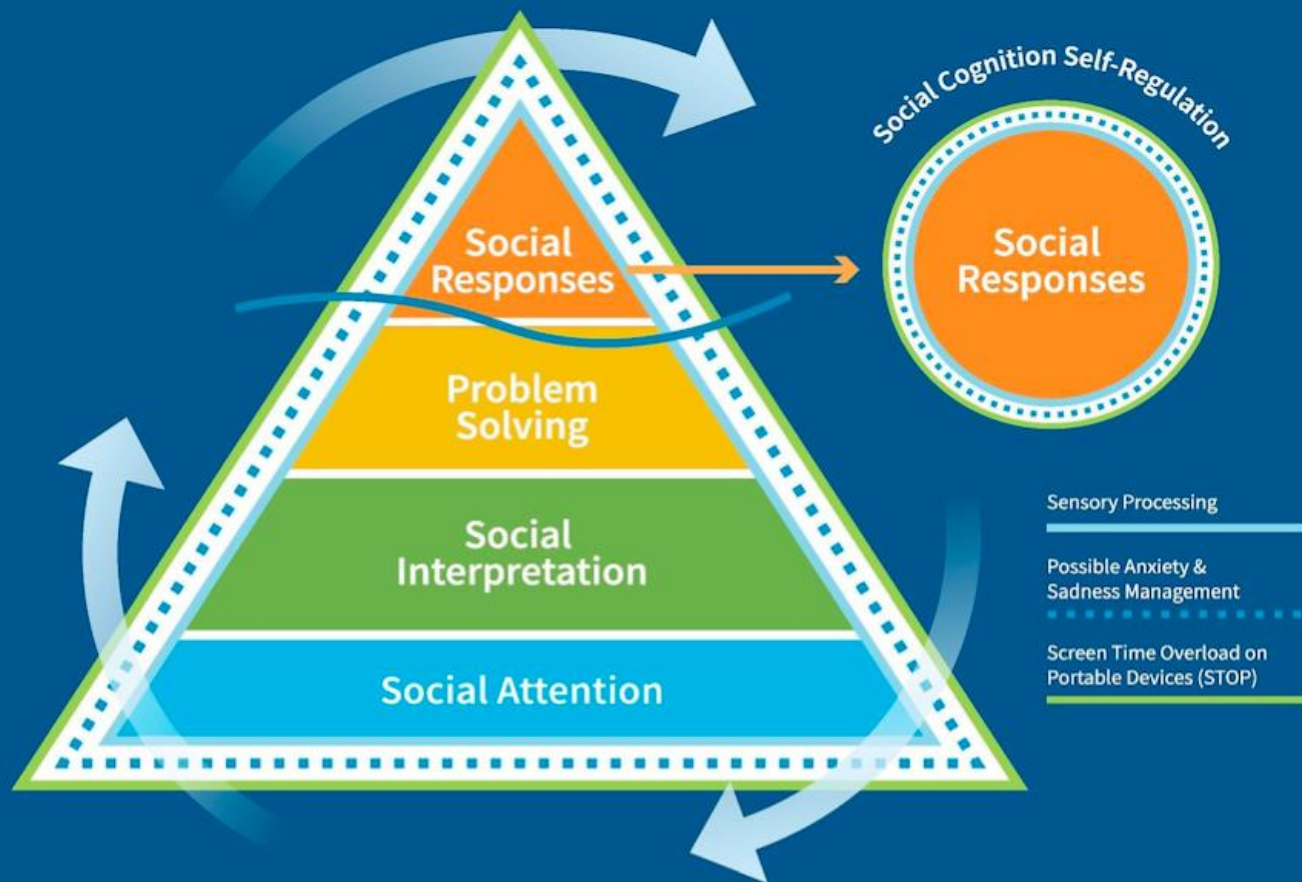


Introducing the Second Step Program!

It is a universal, classroom-based program designed to:



SOCIAL THINKING



THE ZONES OF REGULATION

Supplementary Reproducible E for Elementary Ages

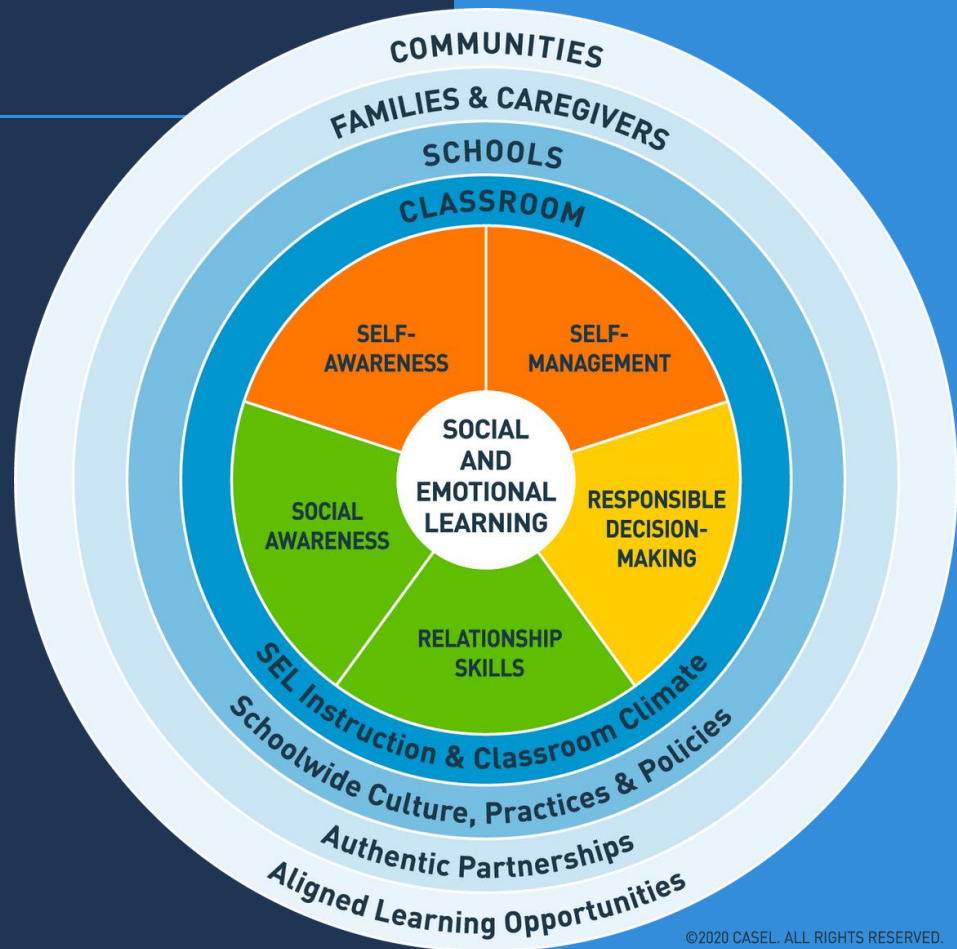
THE
ZONES OF
REGULATION

The **ZONES** of Regulation

			
Blue Zone Sad Bored Tired Sick	Green Zone Happy Focused Calm Proud	Yellow Zone Worried Frustrated Silly Excited	Red Zone overjoyed/Elated Panicked Angry Terrified

NEXT STEPS

- Community Connections
- MS/HS - SEL Curriculum Review
- LHS BRIDGE Program
- VOCAL Data Follow Up Survey
- Universal Screener 6-12
- Review of Existing Surveys/Screeners



OCTOBER 10

World Mental Health Day



Your Mental Health Matters

care+solace

Honor Mental Health Day by checking on a friend today.

BE PRESENT



Avoid
Multitasking



Get in touch with
your senses.



Veer away from
distractions.

REFERENCES

CASEL - District Resource Center

<https://drc.casel.org/build-foundational-support-and-plan/shared-vision-and-plan/process/>

Second Step

<https://www.secondstep.org/second-step-social-emotional-learning>

Social Thinking

<https://www.socialthinking.com/>

Zones of Regulation

<https://zonesofregulation.com/index.html>



Superintendent's Report, October 13

1. October 1st Enrollment
2. Upcoming Vaccination Clinics

Location: Littleton High School

Time: 5:00–7:00 PM

Dates: Wednesday October 26th, Tuesday November 1st, Tuesday November 15, Tuesday November 29th (Email and registration links will be sent out 1 to 2 weeks prior to the date of the clinic)

1 2 3 4 5 6 7 8 9 10 11 12 13 14 15 16 17 18 19 20

3. District Connections Evening for Families (Littleton Middle School)

Date: October 26, 2022

Time: 5:30 -7:45 PM

***Free babysitting will be provided by Park and Rec**

LITTLETON PUBLIC SCHOOLS				
ENROLLMENT AS OF October 1, 2022				
Monthly ENROLLMENT				
		# Students	#Students	#Students Enrolled
SCHOOL	GRADE	Littleton Residents	School Choice	10.01.22
SHAKER LANE	PreK	59	0	59
	K	110	3	113
	T	18	0	18
	1	134	6	140
	2	108	3	111
	SL Total	429	12	441
RUSSELL STREET	3	120	5	125
	4	116	8	124
	5	137	5	142
	RS Total	373	18	391
MIDDLE SCHOOL	6	120	4	124
	7	121	8	129
	8	122	10	132
	MS Total	363	22	385
HIGH SCHOOL	9	116	11	127
	10	112	11	123
	11	108	10	118
	12	101	6	107
	HS Total	437	38	475
	Total ALL	1602	90	1692
Total #Students Littleton Residents		1602		
Total #Students School Choice		90		26 OOD Students
Total Students Enrolled		1692		



OCTOBER 13, 2022
LITTLETON MIDDLE SCHOOL

STANDARD 1: CURRICULUM
INSTRUCTION
ASSESSMENT

GOALS

- Goal #1: Implement standards-based Pk-12 curriculum that is aligned with State Frameworks and is well articulated vertically and horizontally.
- Goal #2: Develop and implement a five-year curriculum review cycle to enhance and/or refine curriculum, Pk-5 and 6-12.
- Goal #3: Use multiple forms of data to measure and evaluate student achievement.
- Goal #4: Identify and implement effective instructional practices to support the academic achievement and social-emotional skills of diverse learners.

ACCOMPLISHMENTS

- LMS ELA Department aligned curriculum to spiral skills and texts from grades 6-8 and build on previous learning.
- LMS Math Department adopted a new math curriculum.
- LMS Science Department began the process of a curriculum review.
- Focused greater attention on MAP scores as an indicator of academic growth and to determine the need for remediation or Tier 2 supports.
- Increased expectations for projects and assessments that require students to transfer and apply content knowledge, demonstrate proficiency and reduce homework load.

CHALLENGES

- Finding time for educators to work with their department teachers to consistently assess content, skill acquisition and student expectations as they move from grades 6-8.
- Supporting educators with consistent professional development that target middle school-specific instructional strategies.
- Evaluating our Tier 2 supports to address individual student needs over general remediation.

REVISIONS/GOALS TO CONSIDER

- Implementation of Culturally Responsive Instruction and Universal Design for Learning as consistent, daily practices.
- Inquiry-based, high engagement lessons with a focus on critical thinking and demonstration of content knowledge.
- Digital citizenship that goes beyond internet safety and targets the identification of misinformation and finding credible sources for online research.



OCTOBER 13, 2022
LITTLETON HIGH SCHOOL

STANDARD 1: CURRICULUM
INSTRUCTION
ASSESSMENT

GOALS

- Review Program of Studies and conduct comparative analysis of high school graduation requirements
- Science and Fine & Performing Arts departments are commencing the first stage of their Curriculum Review Process
- Mathematics department is focused on identifying and addressing any skills gaps from past two years
- World Language is aligning curriculum units to the new state Frameworks
- History & Social Science department is providing Genocide education
- ELA is focused on developing reading identities, writing fluency, and self-efficacy
- All departments are focused on incorporating UDL practices and emphasizing lesson relevance

ACCOMPLISHMENTS

- New Financial Algebra Class
- Strong emphasis across departments on integrating UDL into instruction
- History & Social Science implemented revised Curriculum Frameworks
- Mentoring and coaching new science teachers in grades 6-12
- Offered more electives in Fine & Performing Arts
- New PACE Program in Special Education

ACCOMPLISHMENTS (PREVIOUSLY NOTED IN MAY 2022)

- Abundant professional opportunities related to UDL were provided over the school year
- Revamped Student Support Team process for students struggling with behavioral, academic and emotional concerns
- Offered Dual Enrollment courses in partnership with Middlesex Community College in US History, English, Latin, French, and Statistics
- Continued Seal of Biliteracy
- New Electives: AP Macroeconomics, Financial Algebra, Intro to Programming, Theater Arts
- Financial Literacy units in Economics and Statistics courses continue
- Civics emphasis and Projects in US History II

CHALLENGES

- Addressing and remedying student attendance concerns from past two years
- Adapting instructional practices in response to disrupted learning experience for students during the past two years
- Supporting social emotional and academic needs
- Creating and implementing a new Bridge Program that provides short-term, intensive academic and emotional support for students returning to school after an extended absence

REVISIONS/GOALS TO CONSIDER

- Develop Bridge Program
- Continue implementation of UDL and Culturally Responsive Teaching
- Review and align assessment and grading with best practices
- Commence re-accreditation preparations in Fall 2023
- Provide time and support for World language department as they implement new frameworks
- Make any necessary adjustments in response to recent changes in MCAS
- Review and enhance Computer Science, Engineering, and Environmental Science Offerings

1

